

Penny Bay and Disneyland Theme Park

A brief review of the development process

Raymond Wong
City University of Hong Kong

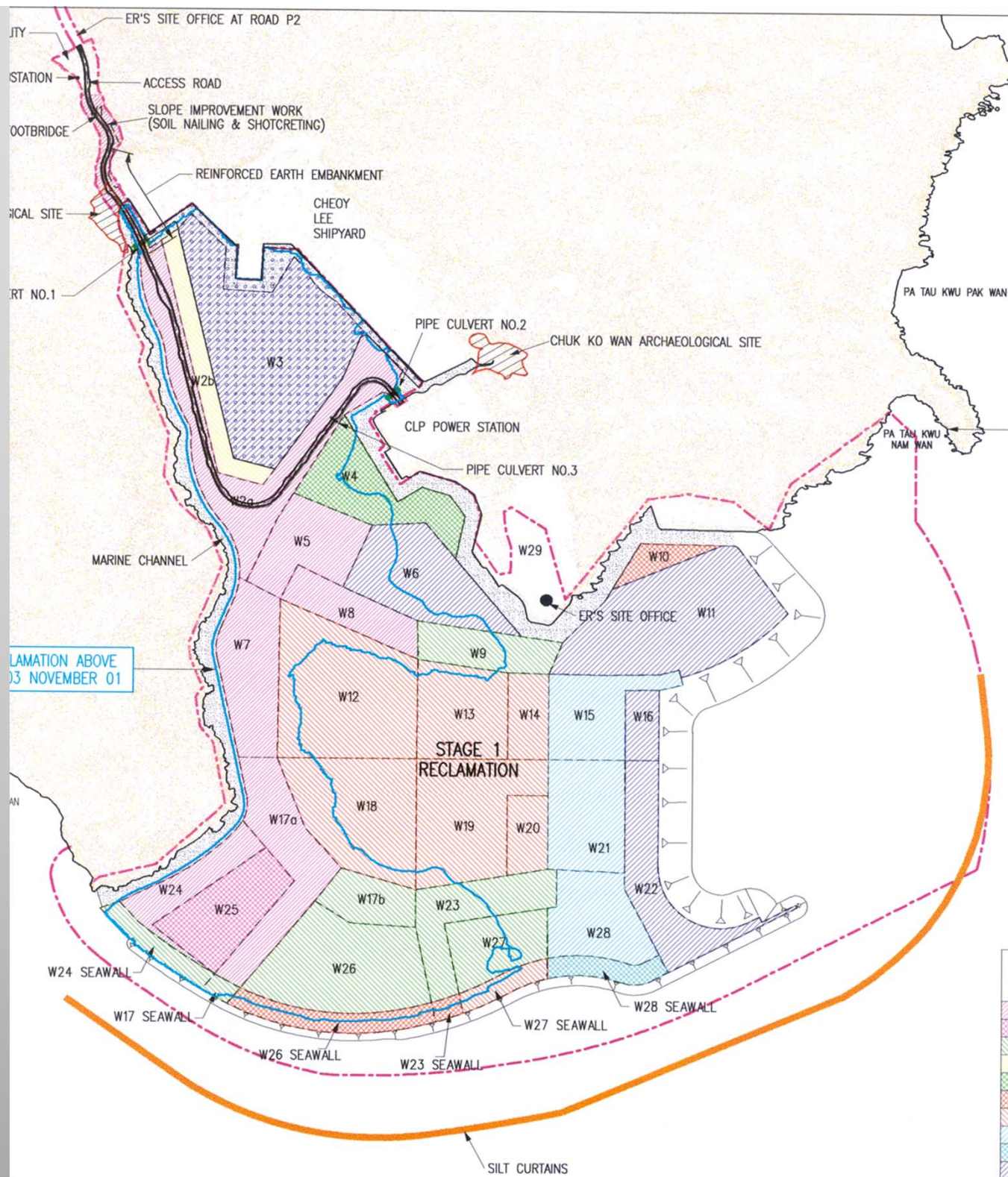
Penny Bay and Disneyland Theme Park - Some fast fact:

1. Reclaimed area: 200 hectares (Stage 1), 80 hectares (Stage 2)
2. Contract period for Stage 1 reclamation: May 2000 to Dec 02
3. Contract sum:
 - \$4 billion (reclamation stage 1)
 - \$6.5 billion (reclamation stage 2 and other associated infrastructure works)
4. Other work quantity:
 - Dredging of unwanted material – 42 million cu meter, with 0.1 million cu meter contaminated material
 - imported fill – 70 million cu meter
 - total length of sloped and vertical seawall – about 3500m

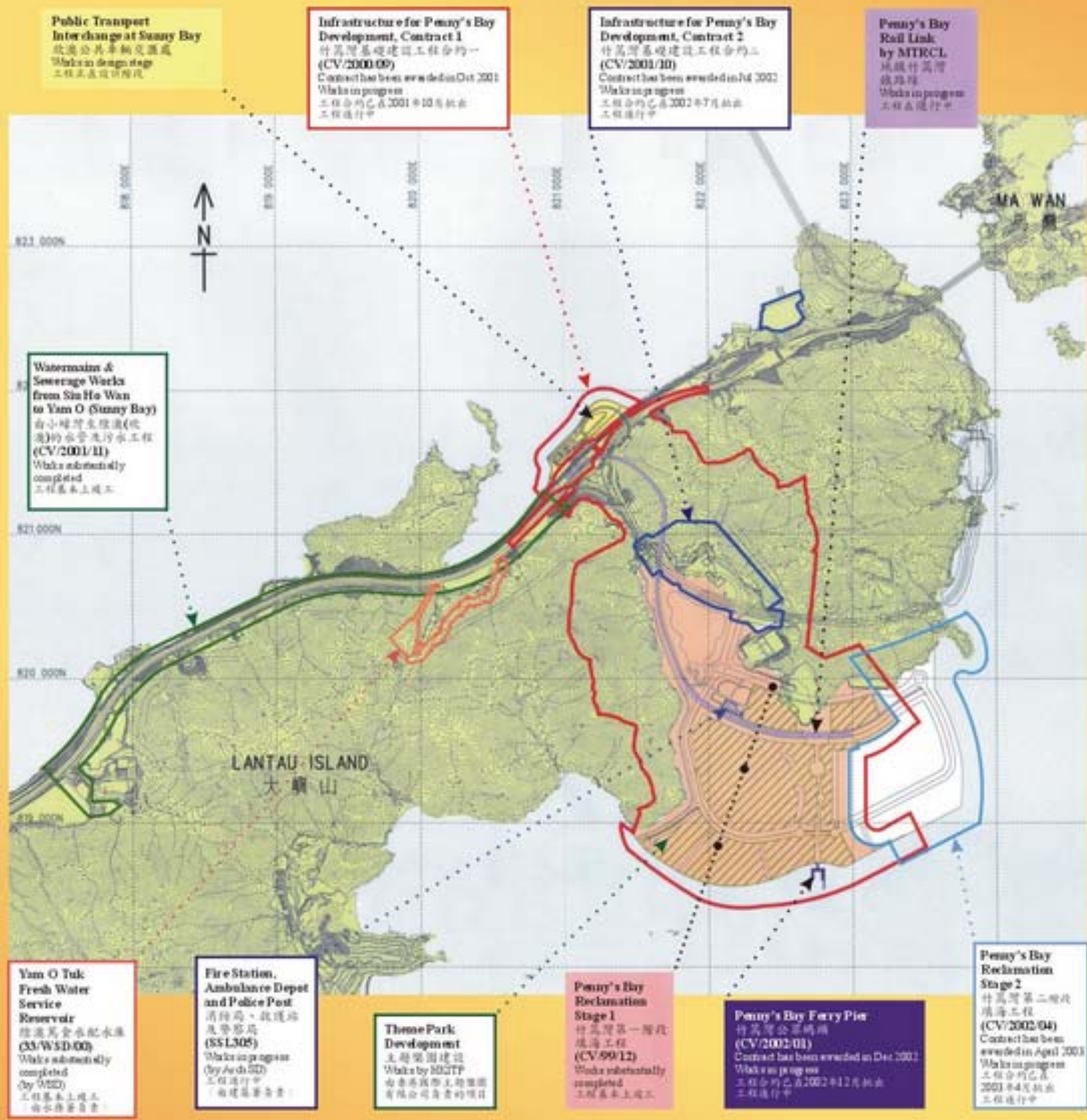
Penny Bay and Disneyland Theme Park - Some fast fact:

5. Other Infrastructure and Associated works:

- Infrastructure works: road construction (total 8.8 km), slope cutting and stabilization, slope vegetation, drainage and sewage network, storm water discharge system (4.5 km box-culvert) fresh and salt water supply facilities, construction of a water recreation centre, public transport interchange, other hard and soft landscaping works
- Decommissioning of the former Choy Lee Shipyard and the related soil decontamination works
- Construction of a public pier
- Essential GIC facilities
- Stage 2 reclamation and the associated works



Various phases
of reclamation



Major work locations









Penny Bay in 1999
before the carrying
out of Reclamation





Early stage of
reclamation in
early 2001



Early stage of
reclamation in early
2001 with the old Choy
Lee Shipyard still in view



Reclamation work as
seen in early 2002



Reclamation work as
seen in early 2002



Practically completed Stage 1
reclamation work as seen in early 2003

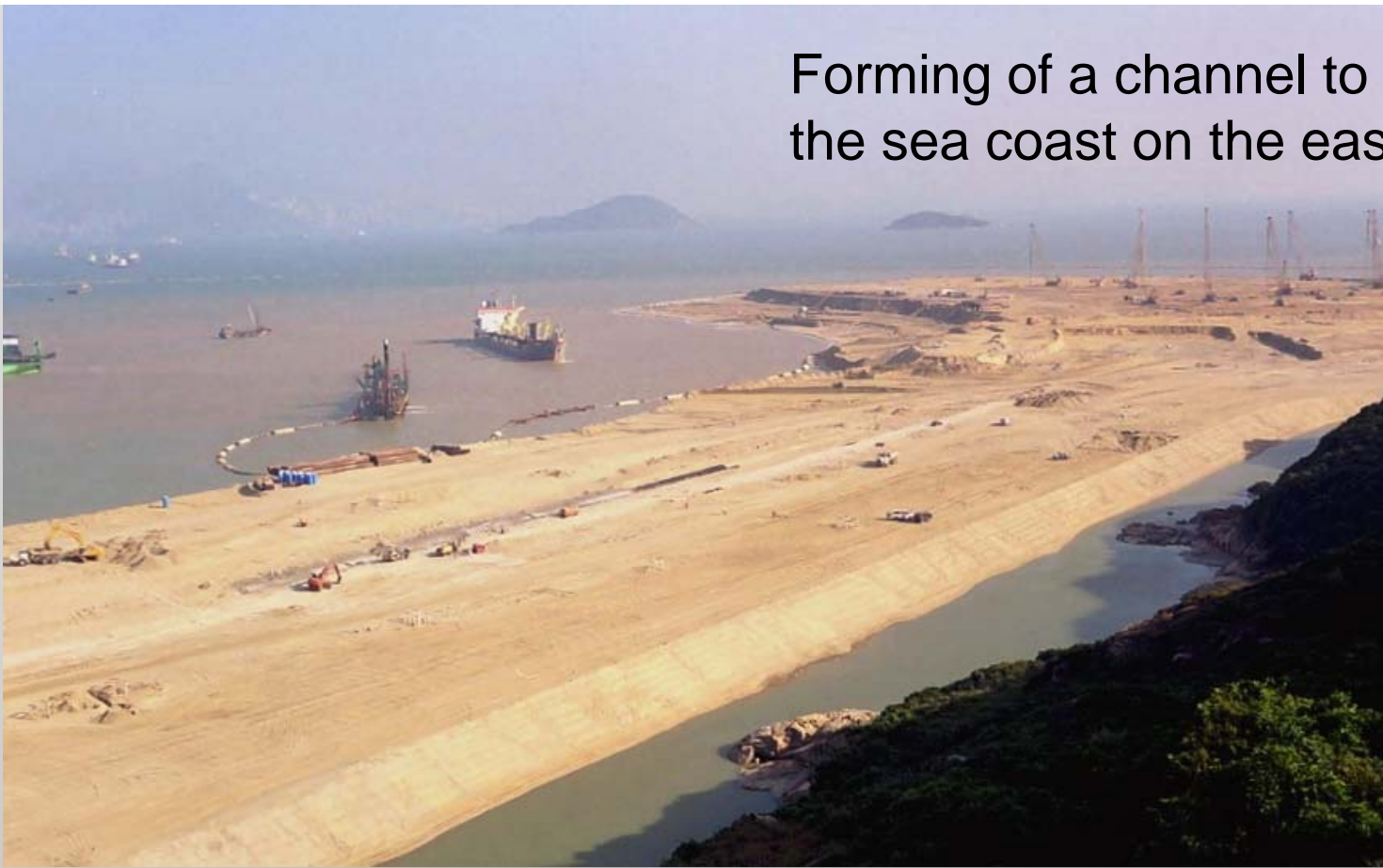




Sand filling using rainbow
jetting by dredger ships

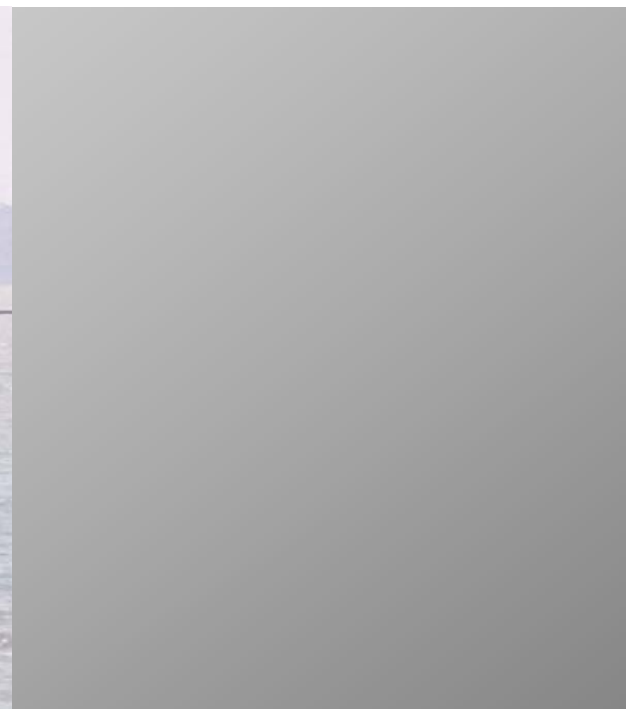


Forming of a channel to reserve portion of the sea coast on the east side of Penny Bay





Pile forming for some of the advanced works



Forming of the
vertical seawall



Forming of the
vertical seawall





Pipe work for
sand jetting



Consolidate the newly reclaimed land by surcharging method





Consolidation by
vibro-compaction



Final stage of reclamation and the commencement of other civil works





Construction of the
roadway linking to
the North Lantau
Expressway



Northern part of Penny Bay seeing the linking roadway and the Water Recreation Centre





The preserved CLP
power station



The preserved
CLP power
station merged
into the theme
park by earth
bund and
landscaping
provisions





Drainage works in the newly reclaimed land



Storm discharge system by box culvert



Road works and service laying



The newly formed water channel
seeing the original coastline



Marine piling for
the public pier





Provision of rows of earth berm with green vegetation forms an importation part of vision–impression design in the theme park



Site of the resort
hotel as seen from
the landscape berm





Landscaping works and
vegetation provided in
the public areas



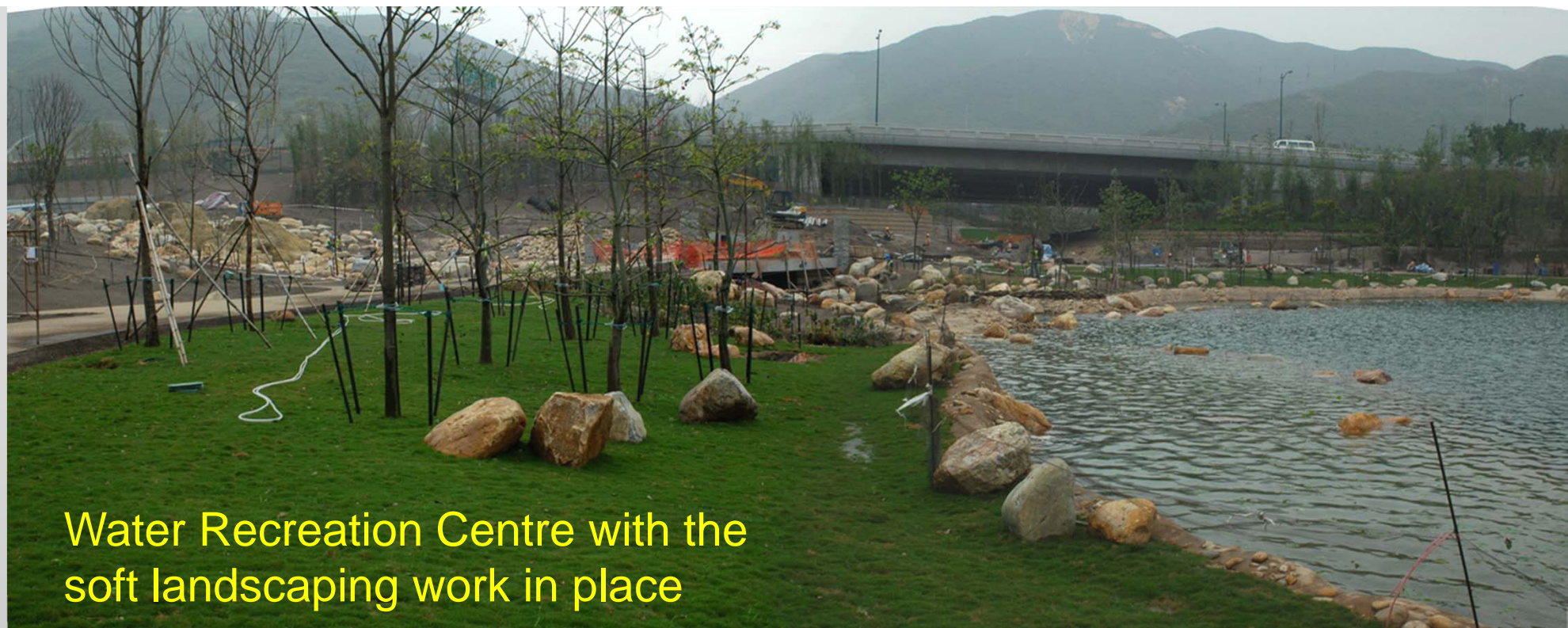


Forming the hard
landscaping works at the
Water Recreation Centre



Partially completed hard
landscaping works at the
Water Recreation Centre







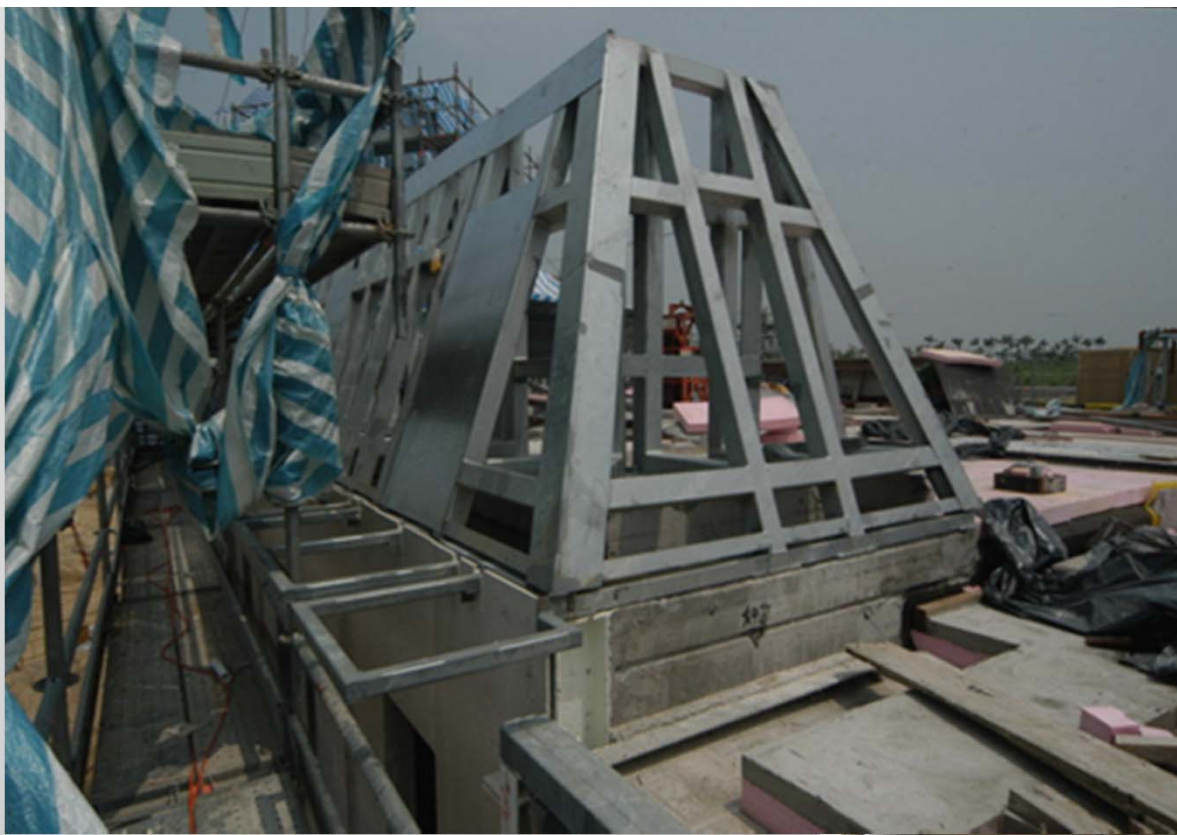
Entrance to the Central Pedestrian Walkway near the Coach parking square



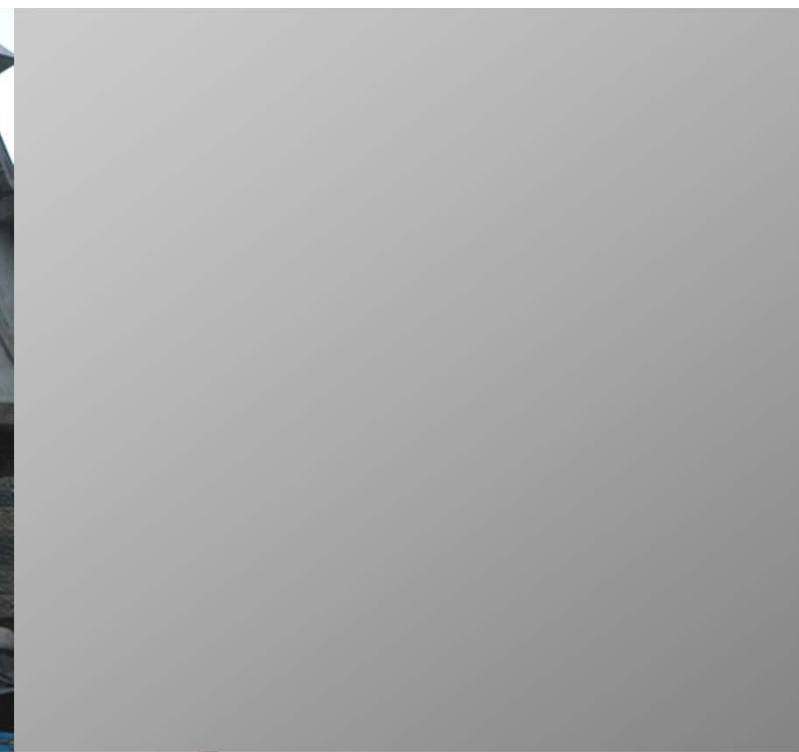


The fountain square at the entrance outside the theme park pay-area





External frame in
galvanized steel for the
function/retail buildings

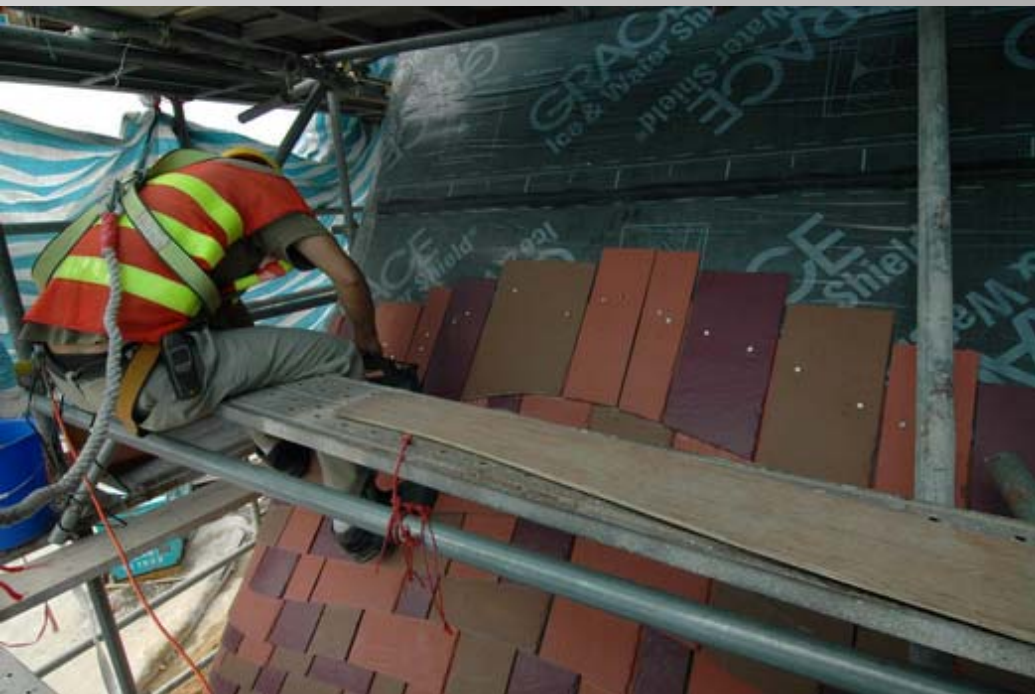


Final touch-up of the
European-styled
town houses

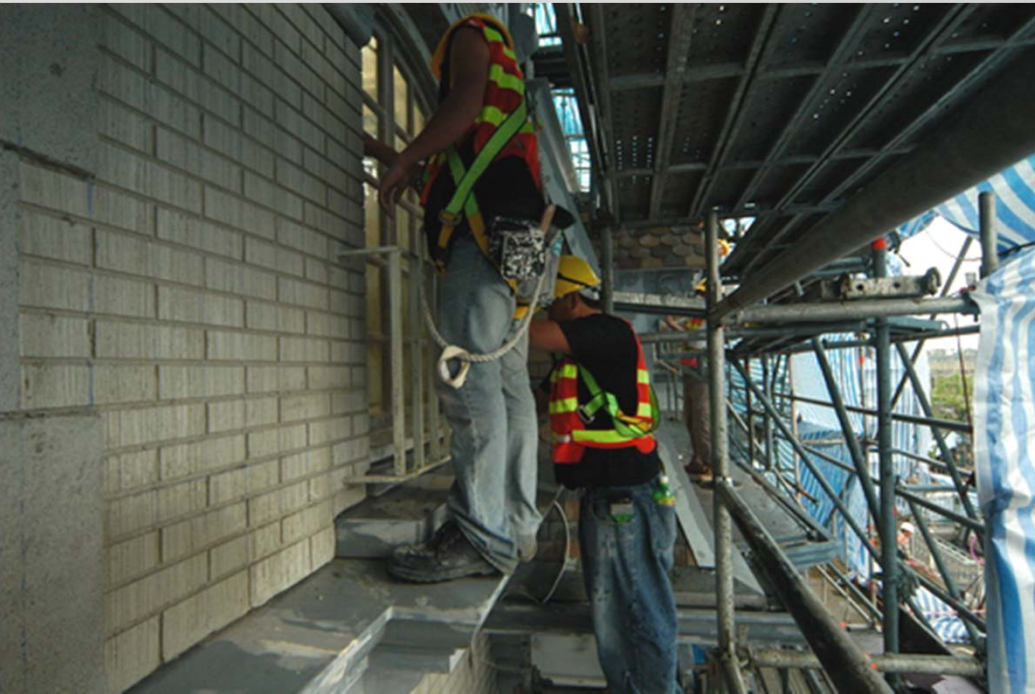




Final decoration
the town house















Final touch-up work at the Courtyard of the Disneyland Castle



Final touch-up works to the Disneyland Castle towers



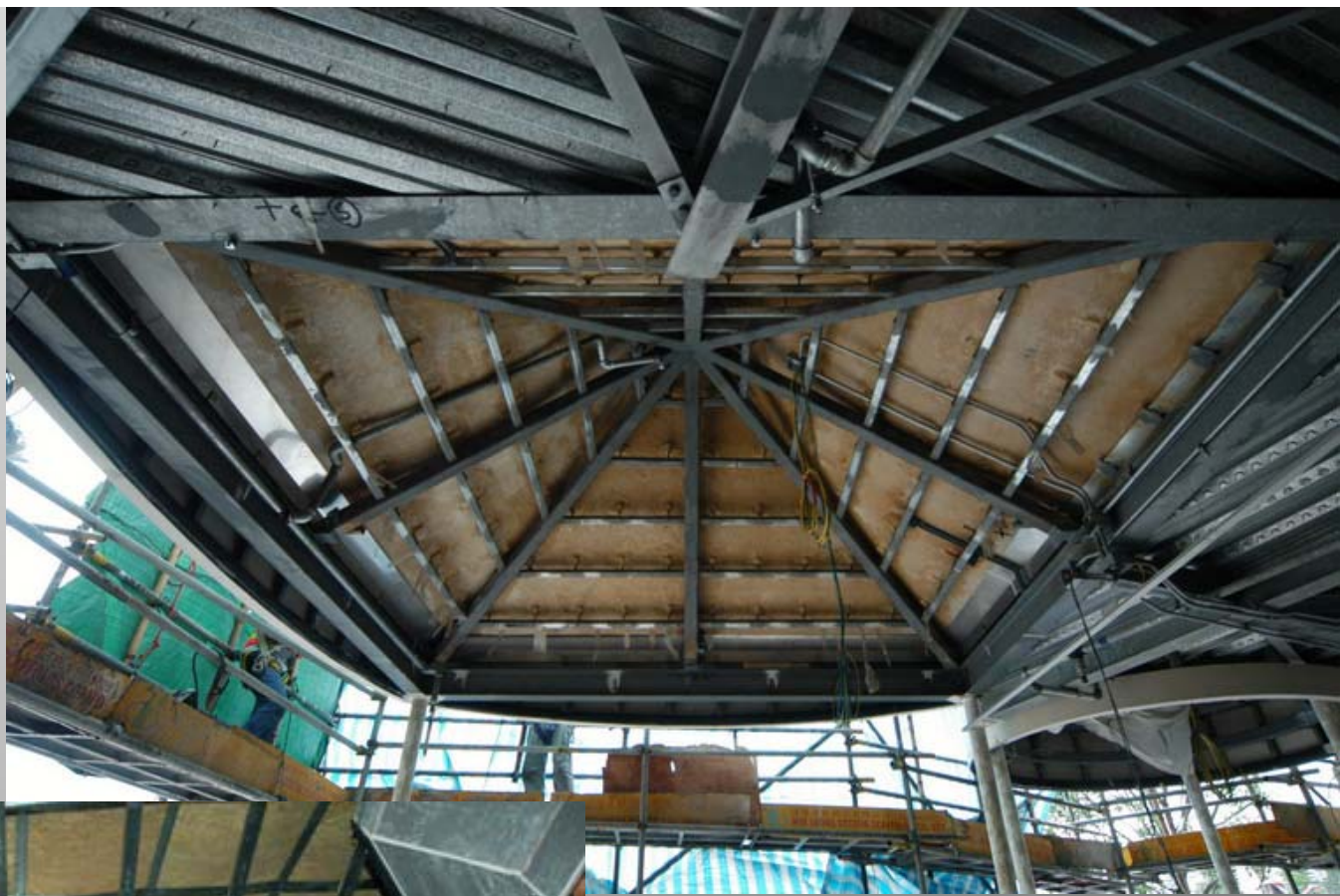


External decoration
to façade of themed
buildings





Final touch-up works
at the entrance of
Disneyland Castle



Ceiling installation to the
function and retail areas



Interior decoration to the
function and retail areas





Forming of various
games centre inside
the theme park





The Space Mountain

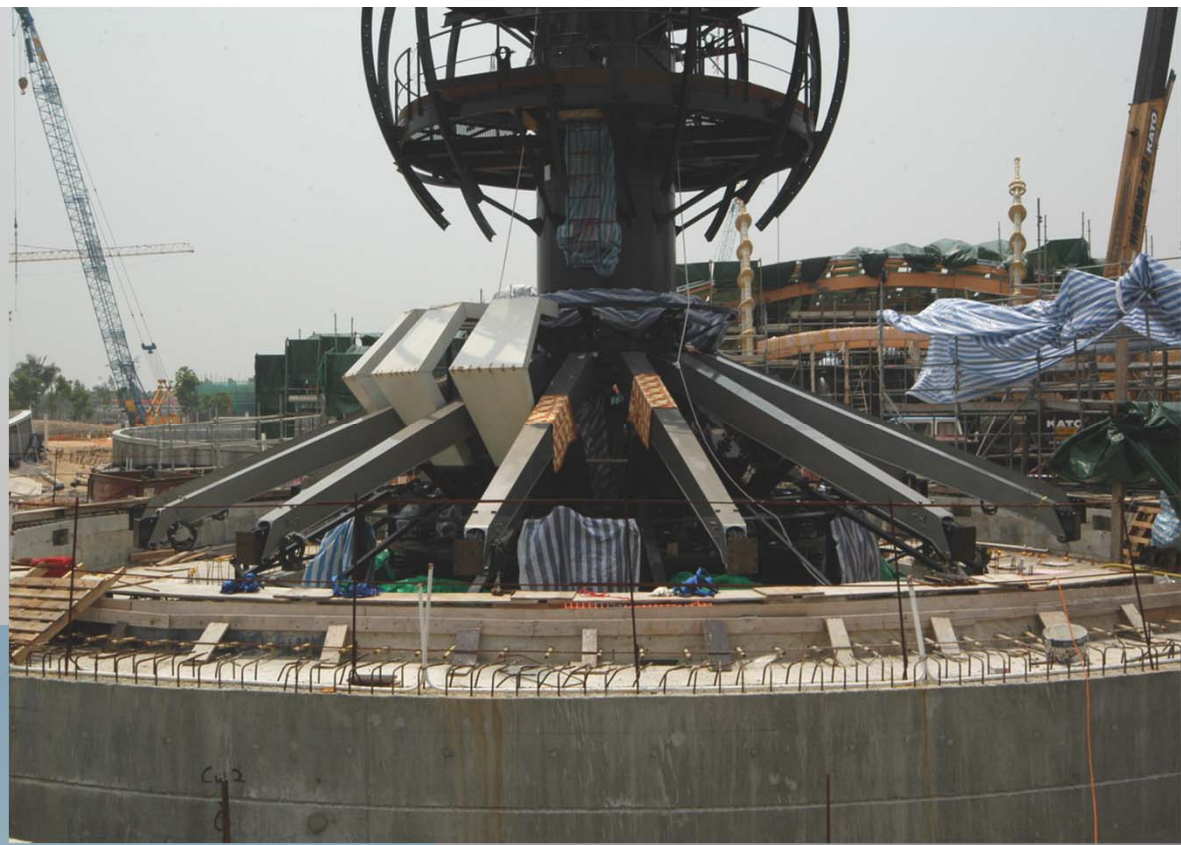


Cladding detail of the
Space Mountain Dome

Track of the Space
Wagon as seen
inside the Space
Mountain Dome



Setting of the mechanized games in the theme park



Setting of the mechanized games in the theme park





Forming of the
American Street





The American Street
in the theme park at
its final touch-up stage





Façade of the buildings
in the American Street



Paving works





Soft landscape and greening items



Forming the hard
landscape facilities



Train wagon encircling
the theme part as one of
the mechanized games





The Disneyland Resort Hotel

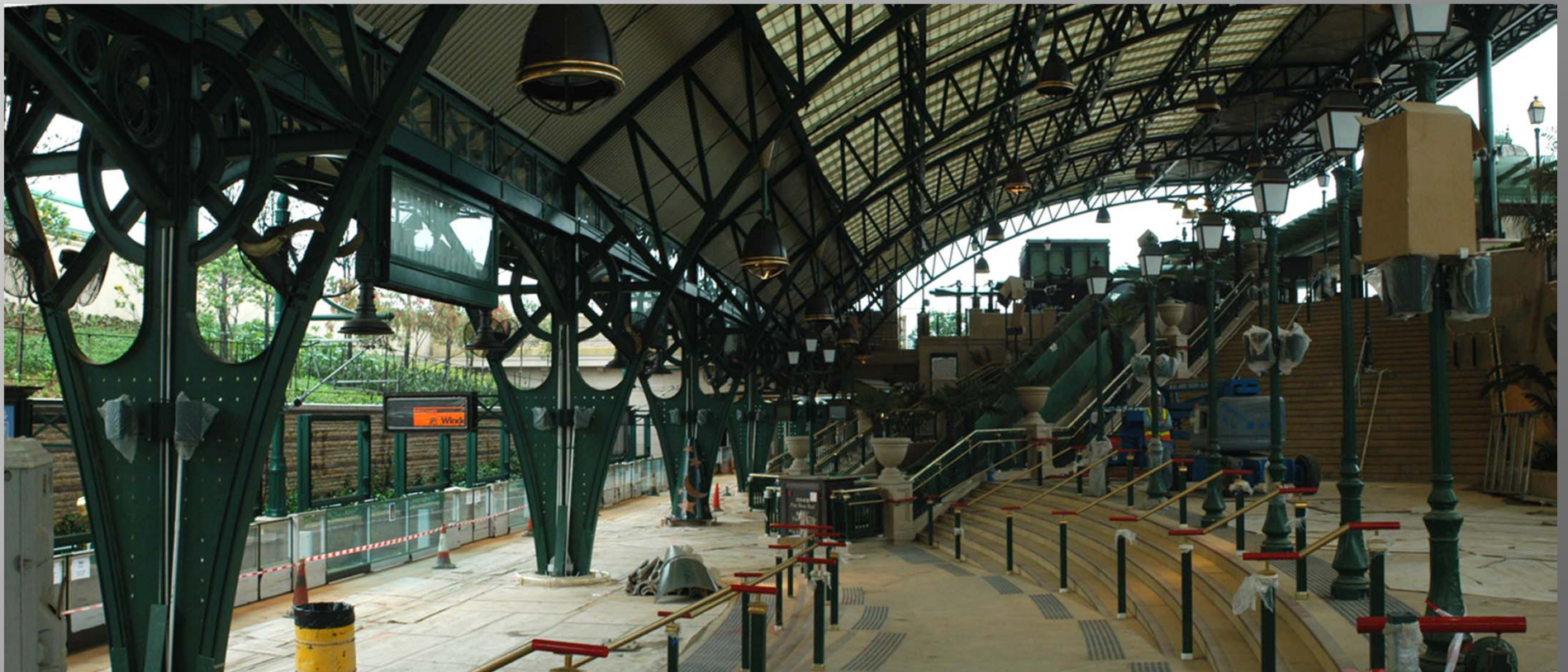
Trackwork of the MTRC Disneyland Resort Line in Penny Bay





Over-run track of the
Disneyland Station

Interior view
of the MTRC
Disneyland
Station





Public bus station
at the entrance to
the theme park





Disneyland Resort
Line Sunny Bay
Station connecting
the MTRC Tung
Chung Line with the
new Theme Park





Detail look of the
Sunny Bay Station



Connecting carriageway
linking the public
transport center at Sunny
Bay with the Theme Park

North Lantau
Expressway





Public pier at
Penny Bay



Paving work



Stage 2 Reclamation





Brand name of Disneyland



**End of presentation
for the Disneyland Theme Park
at Penny's Bay**