

Photo highlight showing the major work  
involvements for the  
Site formation process for  
The City University new Administrative Complex

Prepared by Raymond Wong

January 2011



Overall site formation area for  
the Administrative Compound

site formation area – the southern portion  
(down-hill main site)





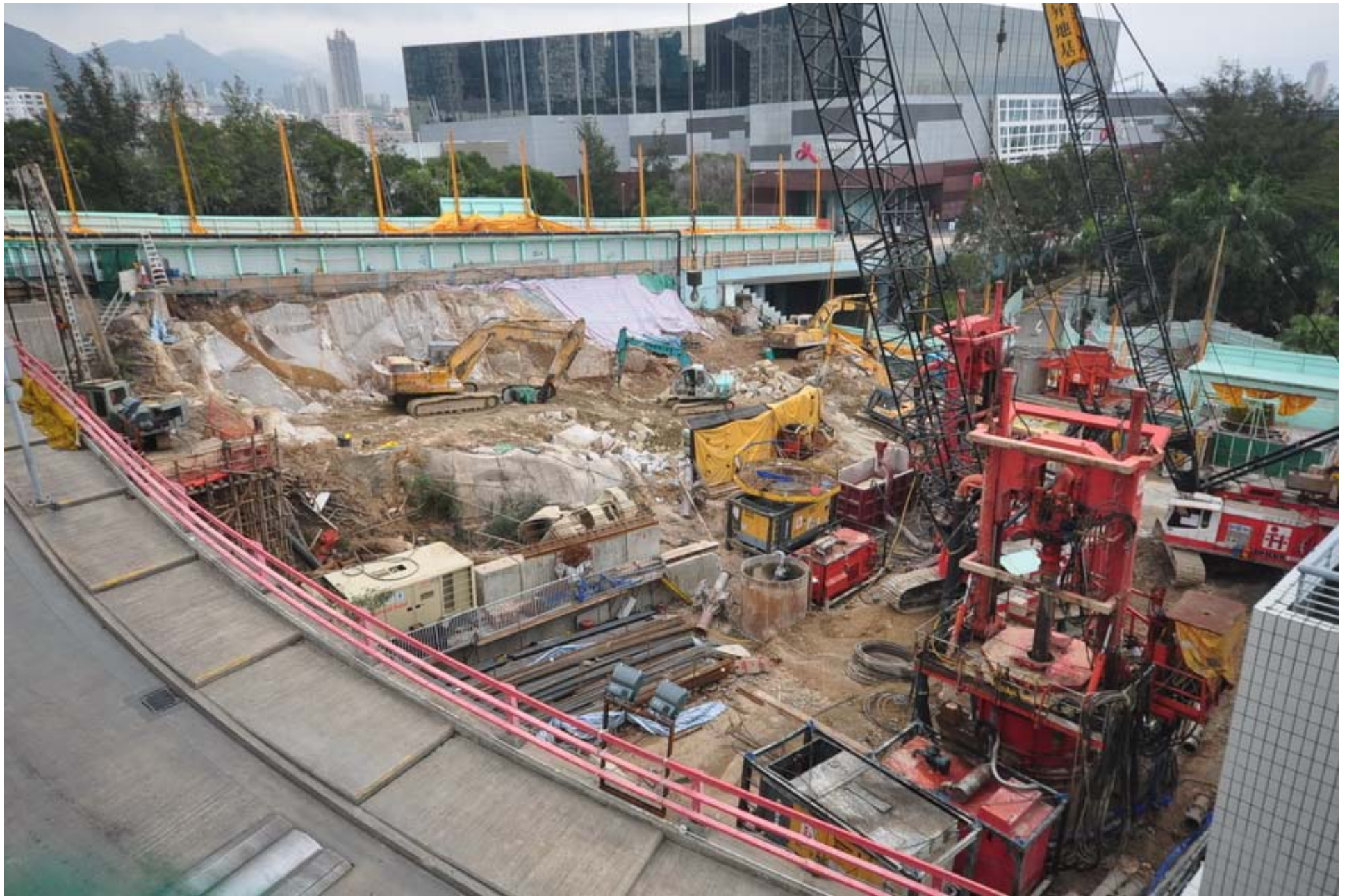
**December 2009**





**December 2009 – before the slope cutting**





February 2010





February 2010





**Mid April 2010**

With site form and foundation worked at the same time







**Mid July 2010**





Mid July 2010





End Aug 2010





1<sup>st</sup> portion of pile cap  
under construction

**Early October 2010**



**End October 2010**



2<sup>nd</sup> Portion of pile cap  
under construction





The entire pile cap  
for the future tower  
being completed

December 2010





January 2011 – Site formation basically completed and the superstructure work started





Cutting the rock slope  
along Tat Chee Avenue







Pit for pile cap



Cut into rock to form  
the ground beams  
and pile cap





Working under the  
vehicular bridge



Pipe pile walling as side protection to vertical-cut line







Early February 2011





Early February 2011





Core wall for the superstructure  
of new building started at the  
later stage of site formation

Early February 2011







Early February 2011





Early March 2011





Early-mid March 2011







Mid March 2011





Mid March 2011



End March 2011





Early March 2011

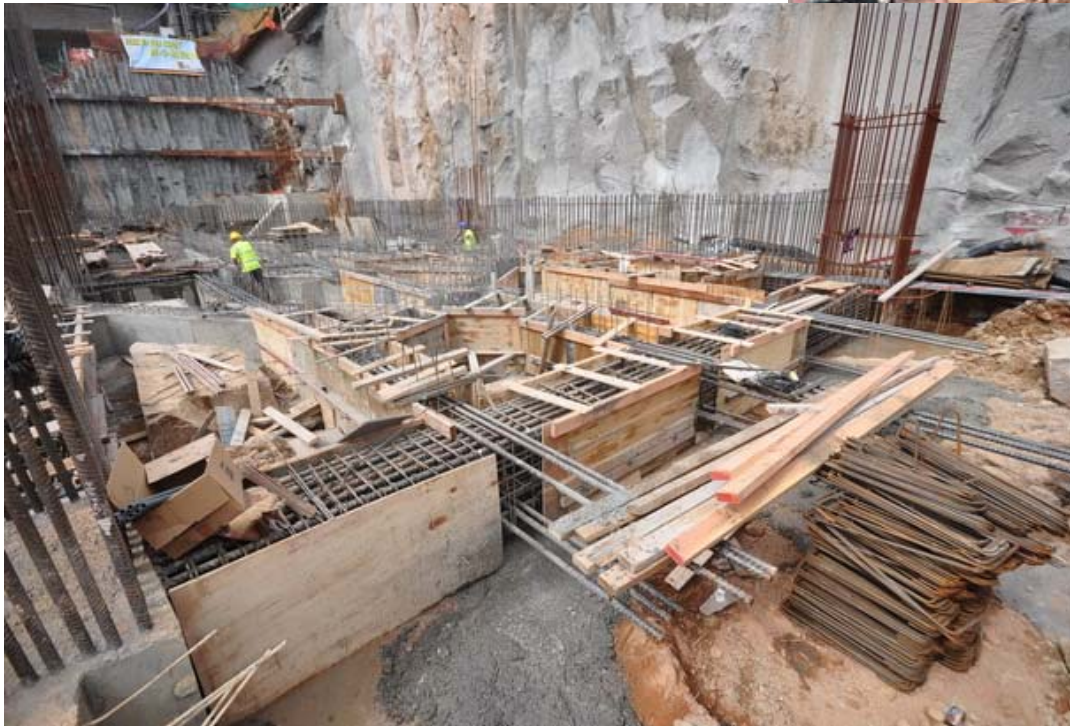


End March 2011





Other detail associated  
with the site formation work  
in the final stage of project



Forming the ground beams



Other detail associated  
with the site formation work  
in the final stage of project

Constructing the core wall





Other detail associated  
with the site formation work  
in the final stage of project



Drainage work



Other detail associated  
with the site formation work  
in the final stage of project

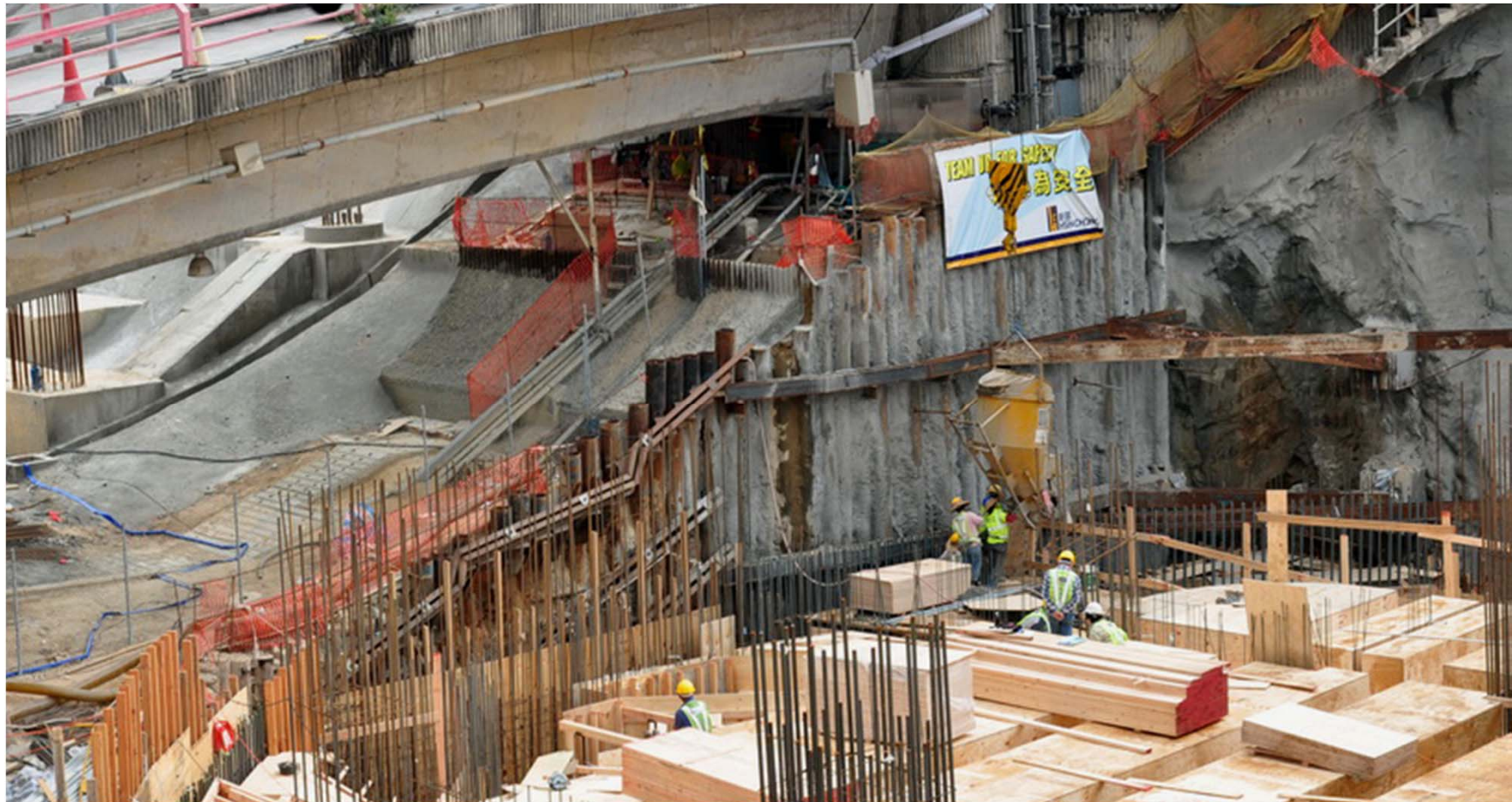
Forming some retaining walls and  
integrating into the nearby terrace





Other detail associated  
with the site formation work  
in the final stage of project

Forming some retaining walls and  
integrating into the nearby terrace







The latest update in March 2011





The latest update in April 2011





The latest update in April 2011





The latest update in April 2011





The latest update in May 2011



Site formation area – the northern portion  
(up-hill strip)





February 2010





September 2009  
(early stage after  
site handing over  
to contractor)



August 2010  
(with foundation works all  
completed at this stage)





June 2010

Temporary retaining wall to protect the cut-slope at the 1<sup>st</sup> stage (plastic sheet to protect soil surface being washed by rain)





Addition support when  
excavation proceeded  
downward

September 2010





Site formation and foundation working at the same time in March 2010







Forming the foundation  
using bore-pile







Forming a new pit and  
supported by pipe-pile for  
the construction of a pile cap

October 2010





November 2010





New pile cap  
before concreting

December 2010





December 2010





January 2011









End February 2011





End February 2011





Mid March 2011



End March 2011







Link bridge separating the two sides of site





The latest update in April 2011





The latest update in April 2011





The latest update in April 2011





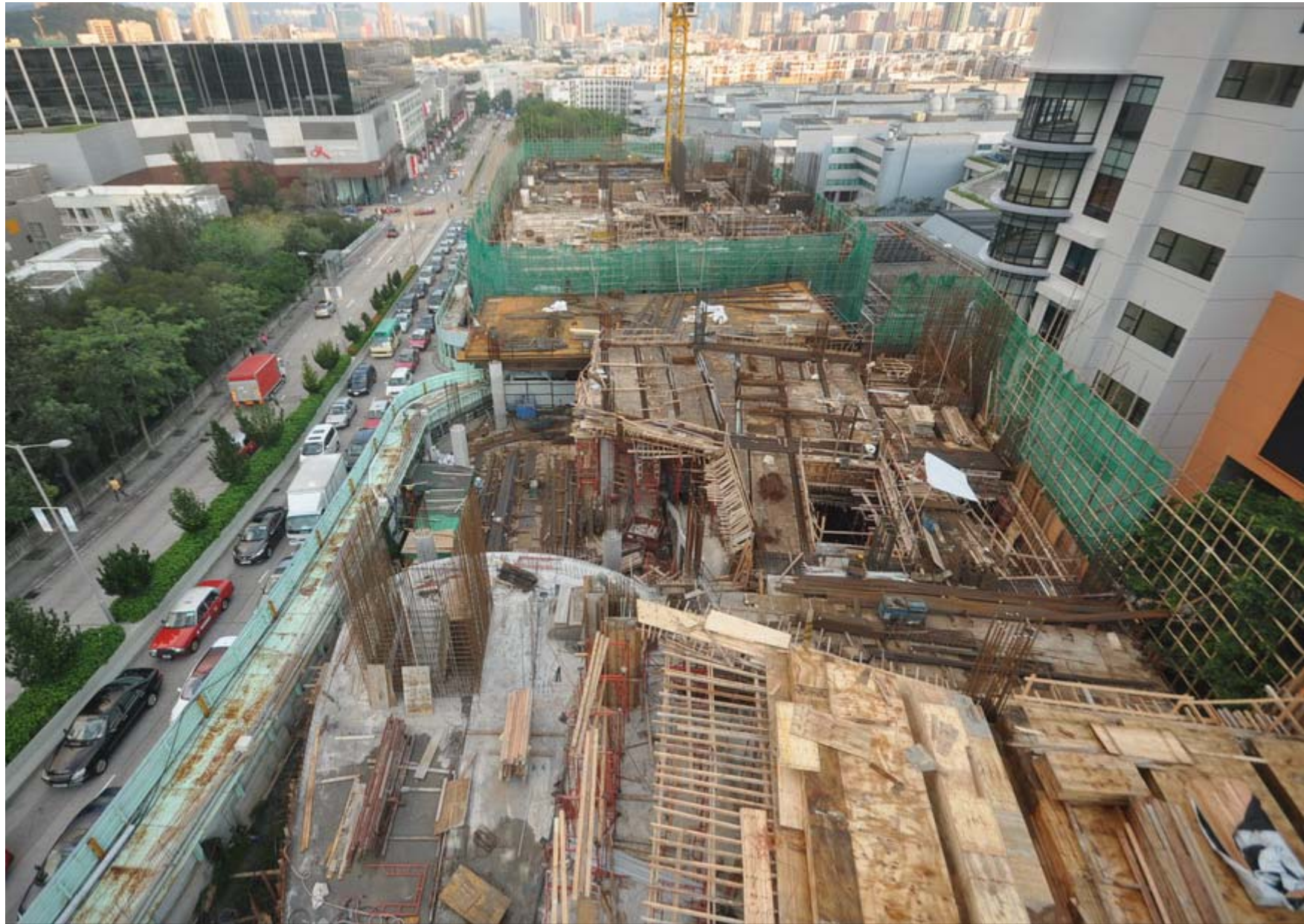
The latest update in May 2011





The latest update in June 2011





The latest update of the entire CityU Administration Building site in June 2011



End of presentation for  
site formation status up  
to End Juneh 2011